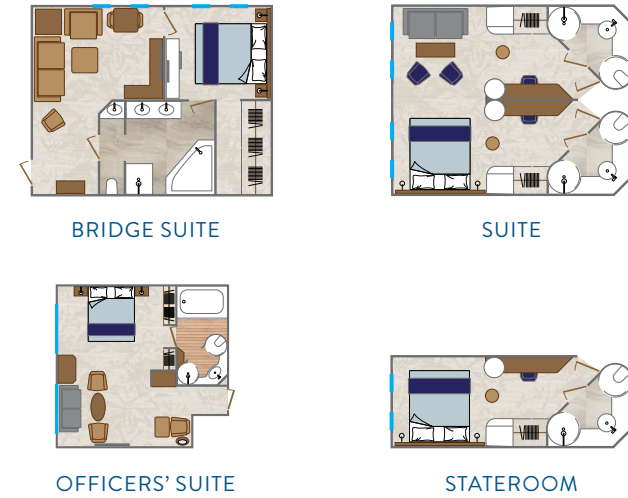
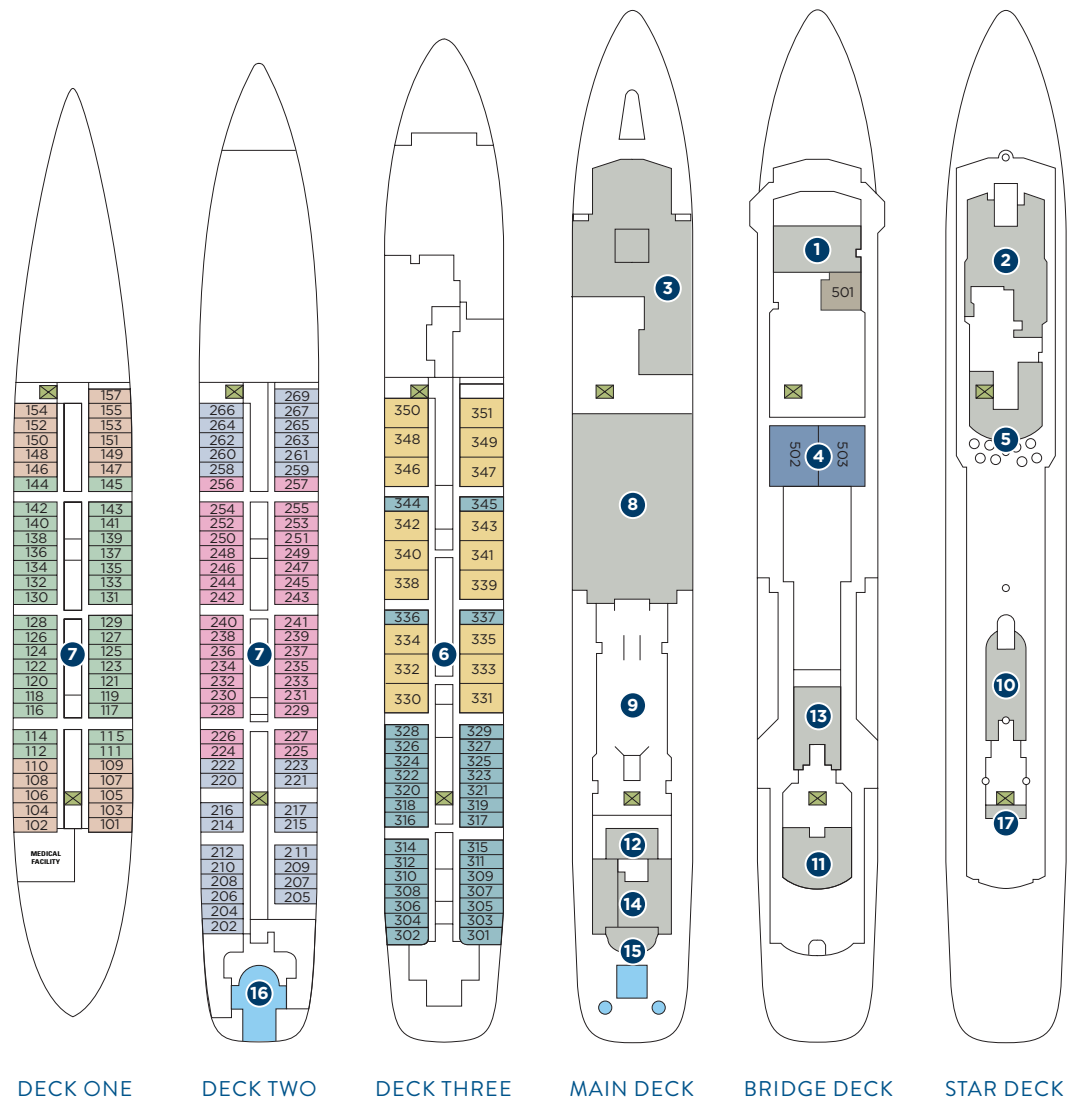


WIND SURF

WORLD'S LARGEST SAILING SHIP



STATEROOMS & SUITES

- Bridge Suites:** 495 square feet (46 square meters)
- Officers' Suite:** 242 square feet (22.5 square meters), 1 bathroom
- Suites:** 376 square feet (35 square meters), 2 bathrooms
- Staterooms:** 188 square feet (18 square meters)
- Staterooms with 3rd Berths:** 117-140; all suites
- Staterooms with One Queen Size Bed Only (no twin option):** 101, 102, 157, 202, 204, 269, 301-302, 303-304

ONBOARD SPACES

- 1 Bridge
- 2 Stella Bistro
- 3 Amphora Restaurant
- 4 Bridge Suites
- 5 Veranda/Candles
- 6 Suites and Staterooms
- 7 Staterooms
- 8 Lounge
- 9 Yacht Club Café
- 10 Fitness Center
- 11 Compass Rose Bar
- 12 Reception
- 13 World Spa by Windstar
- 14 Star Boutique
- 15 Pool / Pool Bar / Whirlpools
- 16 Watersports Platform
- 17 Terrace Bar

- Bridge Suites
- Officers' Suite
- Suites
- Category TX
- Category AX
- Category A
- Category BX
- Category B
- Public Spaces
- Stairs / Elevator

SHIP FACTS

- GUEST CAPACITY:** 342
- GUEST DECKS:** 6
- CREW MEMBERS:** 210
- LENGTH:** 535 feet (162 meters) at waterline; 619 feet (188.8 meters) including bowsprit
- DRAFT:** 16.5 feet (5 meters)
- TONNAGE:** 14,745 gross registered tons (grt)
- BEAM:** 66 feet (20 meters)
- SAILS:** 7 triangular, self-furling, bridge-operated sails with 26,881 square feet (2,600 square meters) of Dacron surface area
- MASTS:** 5 at 221 feet (67.5 meters)
- ENGINES:** 4 diesel electric generator sets, 2 electrical propulsion motors
- SPEED:** 10 to 12 knots with engines only; up to 15 knots with prevailing wind
- SHIP'S REGISTRY:** Bahamas



- Access to board ship is via stairs only.
- Access to/from outside deck may require assistance with doors and thresholds.